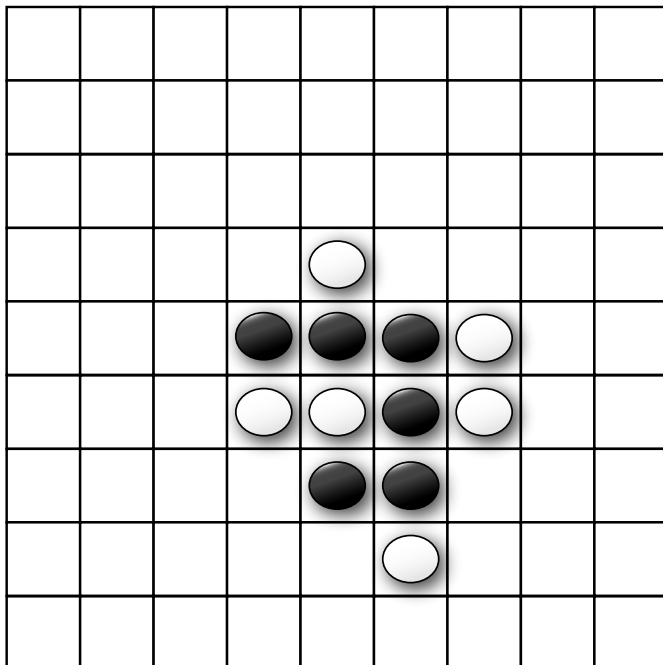
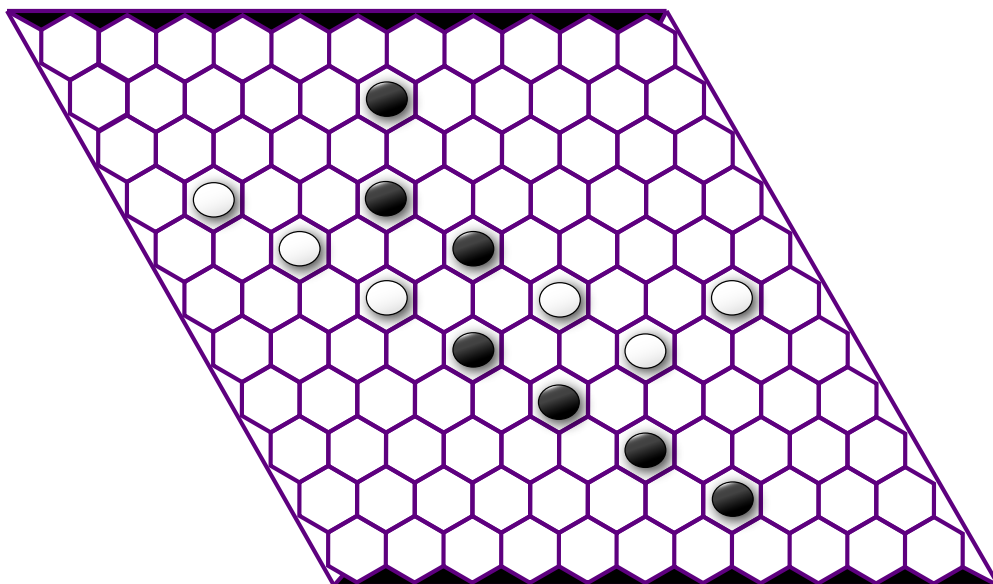


1. Fill in the correct move for black to take, so as to guarantee a Snaky win in two more moves. (Just put a black dot in the correct place!)



2. It is white's move in hex, but there is no way to win. White cannot block black's path. But what if white still gets to move by adding a piece, but also gets one take-back by changing the location of another piece: can white win? If you think "yes," show where to add a new stone for white, and where to alter a position (with an arrow to show an existing white stone being moved from one spot and where to another) and then explain why it works for white. Black gets no take-backs! Or, answer "no."



Explain: