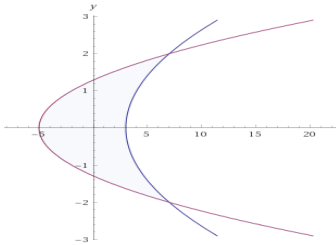


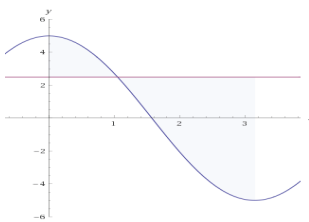
Calculus II. Quiz 1. Name _____ Time _____

Show all work on this page for full and/or partial credit.

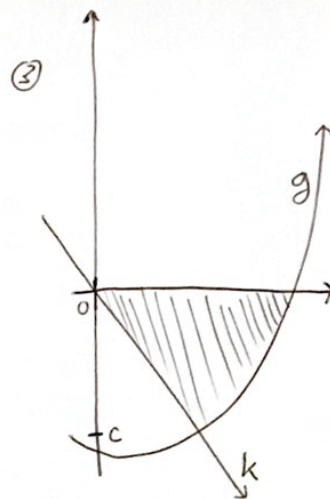
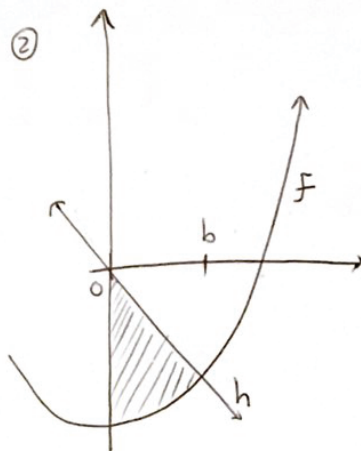
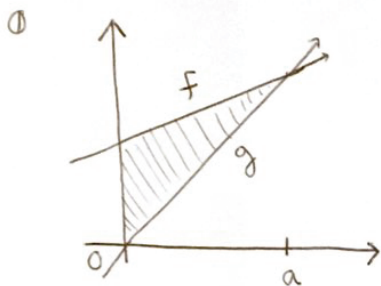
1. Find the area between the curves $y^2 = x - 3$ and $3y^2 = x + 5$. You may use a calculator, but make sure to show the entire set-up in order to get credit.



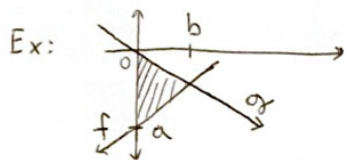
2. Find the area between $y = 5/2$ and $y = 5 \cos x$ for $0 \leq x \leq \pi$. You may use a calculator, but make sure to show the entire set-up in order to get credit.



3)

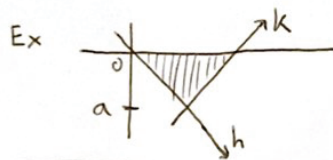


For each: set up an integral for the shaded area.



Answer:
Type I;

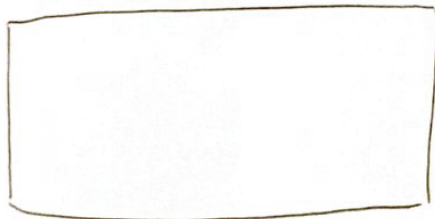
$$\int_0^b (g(x) - f(x)) dx$$



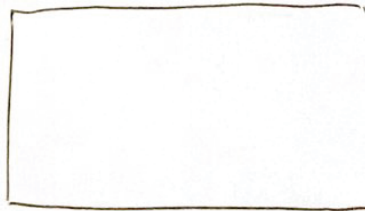
Answer:
Type II;

$$\int_a^0 (k(y) - h(y)) dy$$

①



②



③

